

YAHAM

Yaham Optoelectronics Co., Ltd



FV-SERIES

Outdoor - P1.25 P1.56 P1.95 P2.6 P3.9

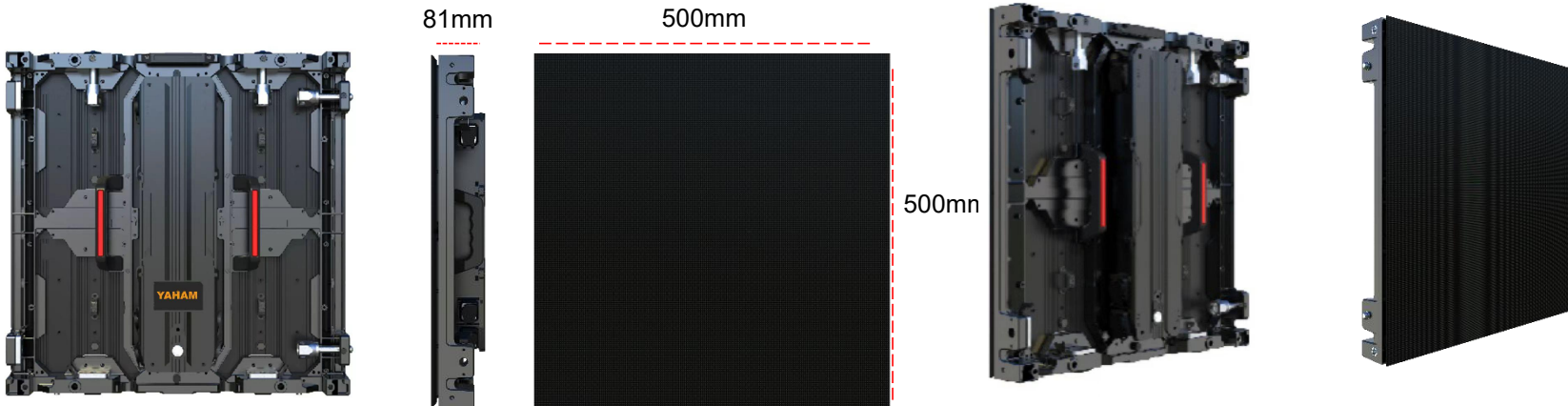
Indoor - P1.56 P1.95 P2.6 P3.9

1.1 INTRODUCTION

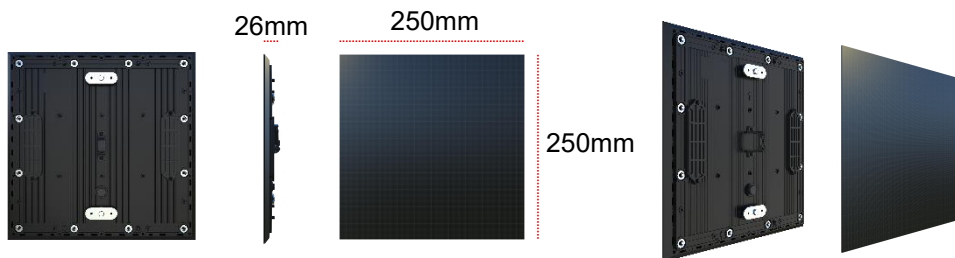
YAHAM

Yaham Optoelectronics Co., Ltd

Cabinet



Module



MEASUREMENT

MODULE

Width: 250mm

Height: 250mm

Thickness: 26mm

Weight: 1kg

CABINET

Width: 500mm

Height: 500mm

Thickness: 81mm

Weight: 9kg

1.2 INTRODUCTION

YAHAM

Yaham Optoelectronics Co., Ltd



2.1 SPECIFICATIONS (INDOOR)



FV-SERIES

- X-GOB: Exterior GOB
- S-lock: + Magnetic Front Lock
- Full Front Maintenance & Back Maintenance
- Double Diecasting

PITCH	P1.225	P1.56	P1.95	P2.6	P3.9
SERIES NO.	YH-FV-1.225i	YH-FV-1.56i	YH-FV-1.95i	YH-FV-2.6i	YH-FV-3.9i
TRUE BLACK SMD	>800cd/m ²	>800cd/m ²	>800cd/m ²	>800cd/m ²	>800cd/m ²
DISTANCE	> 1.225m	> 1.56m	> 1.95m	> 2.6 m	> 3.9 m
LED KIND	SMD1010 (X-GOB)	SMD1010 (X-GOB)	SMD1010 / SMD1515 (X-GOB)	SMD1515 (X-GOB)	SMD1515 (X-GOB)
PIXEL DENSITY	666389 dots/ m ²	409600 dots/m ²	262144 dots/m ²	147456 dots/m ²	65536 dots/m ²
TECHNOLOGY	S-lock, X-GOB, FPI , HDR , i-MODULES, CCT (Optional technology)				
CONTRAST	8000:1				
REFRESH RATE	1920Hz - 3840Hz				
VIEWING ANGLE	160°(H) / 160°(V)				
MODULE SIZE	250 x 250 mm				
CABINET SIZE	500 x 500 x 81 mm/ 19.7" x 19.7"				
CABINET RES	408 x 408px	320 x 320 px	256 x 256 px	192 x 192px	128 x 128 px
ENVIRONMENT	IP65/IP20				
MAX POWER	520W/m ²				
VOLTAGE	AC 100-240V				
WEIGHT	Die-cast: 9 kg / Panel				

2. SPECIFICATIONS (OUTDOOR)

YAHAM

Yaham Optoelectronics Co., Ltd



FV-SERIES

- X-GOB: Exterior GOB
- S-lock: + Magnetic Front Lock
- Full Front Maintenance
- Back Maintenance
- Double Diecasting

PITCH	P1.25	P1.56	P1.95	P2.6	P3.9
SERIES NO.	YH-FV-1.25e	YH-FV-1.56e	YH-FV-1.95e	YH-FV-2.6e	YH-FV-3.9e
TRUE BLACK SMD	>3500cd/m ²	>3500cd/m ²	>3500cd/m ²	>3500cd/m ²	>4000~4500cd/m ²
BLACK SHELL SMD	-	-	-	-	>5000cd/m ²
DISTANCE	> 1.25m	> 1.56m	> 1.95m	> 2.6m	> 3.9m
LED KIND	MicroX	MicroX	MicroX	MicroX	SMD1515 (X-GOB)
PIXEL DENSITY	640000 dots/m ²	409600 dots/m ²	262144 dots/m ²	147456 dots/m ²	65536 dots/m ²
TECHNOLOGY	S-lock, X-GOB, AOB, FPO, HDR, i-MODULES, CCT				
CONTRAST	8000:1				
REFRESH RATE	1920Hz - 3840Hz				
VIEWING ANGLE	160°(H) / 160°(V)				
MODULE SIZE	250 x 250 mm				
CABINET SIZE	500 x 500 x 81 mm/ 19.7" x 19.7"				
CABINET RES	400 x 400 px	320 x 320 px	256 x 256 px	192 x 192 px	128 x 128 px
ENVIRONMENT	IP65 / IP54				IP65 / IP54
MAX POWER	(CCT) 600W/m ²				
VOLTAGE	AC 100-240V				
WEIGHT	Die-cast: 9 kg / Panel				

FPO FINE PITCH OUTDOOR



BLACK SHELL SMD



High reflection



Low contrast



Poor effect at low gray image



Bright visual effect

6000cd/m²

Higher brightness

PITCH:≤P2.6



TRUE BLACK SMD



Low reflection



High contrast



Good effect at low gray image

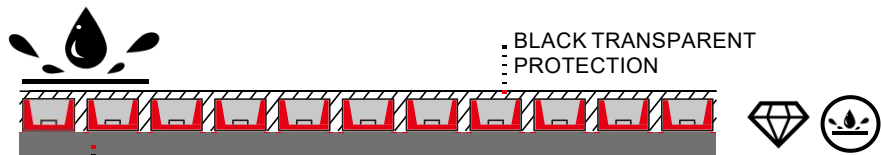


Rich visual effect

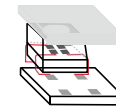
3500-4500cd/m²

Enough brightness

3.2 . X-GOB TECHNOLOGY



X-GOB



This coating not only protect LED, but also prevent from static, dust, water, and collision damage, **Totally Outdoor USE.**

- Robust & impact resistant
- Larger viewing angle

Feature	MASK	GOB	X-GOB
Protection	★★★	★★★★★	★★★★★
Angle	★★★	★★★★☆	★★★★☆
Flatness	★★★★★	★★★	★★★★★
Uniformity	★★★★★	★★★	★★★★☆
Luminousness	★★★★★	★★★	★★★★☆
Contrast	★★★★★	★★★	★★★★☆

3.3 S-LOCK TECHNOLOGY

YAHAM

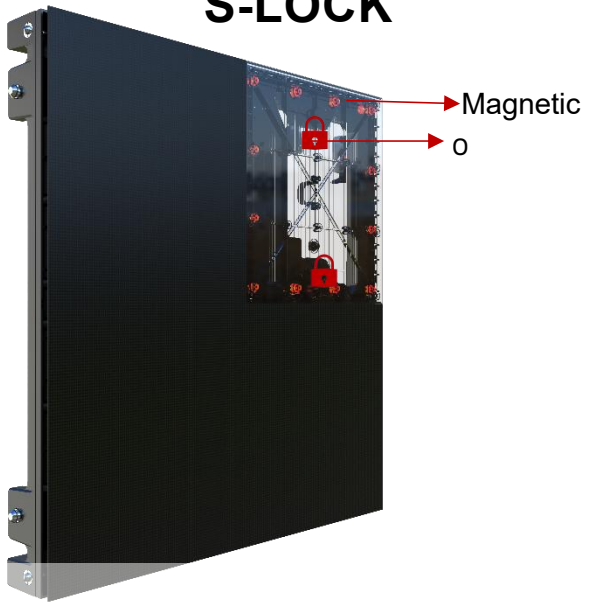
Yaham Optoelectronics Co., Ltd

S-LOCK

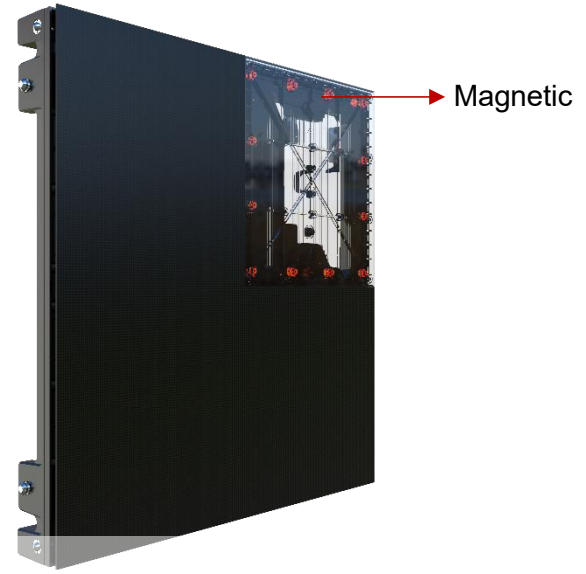
+ Magnetic Front Lock

- Mechanic front maintenance
- Highest security level
- FPO: Fine Pitch Outdoor

S-LOCK

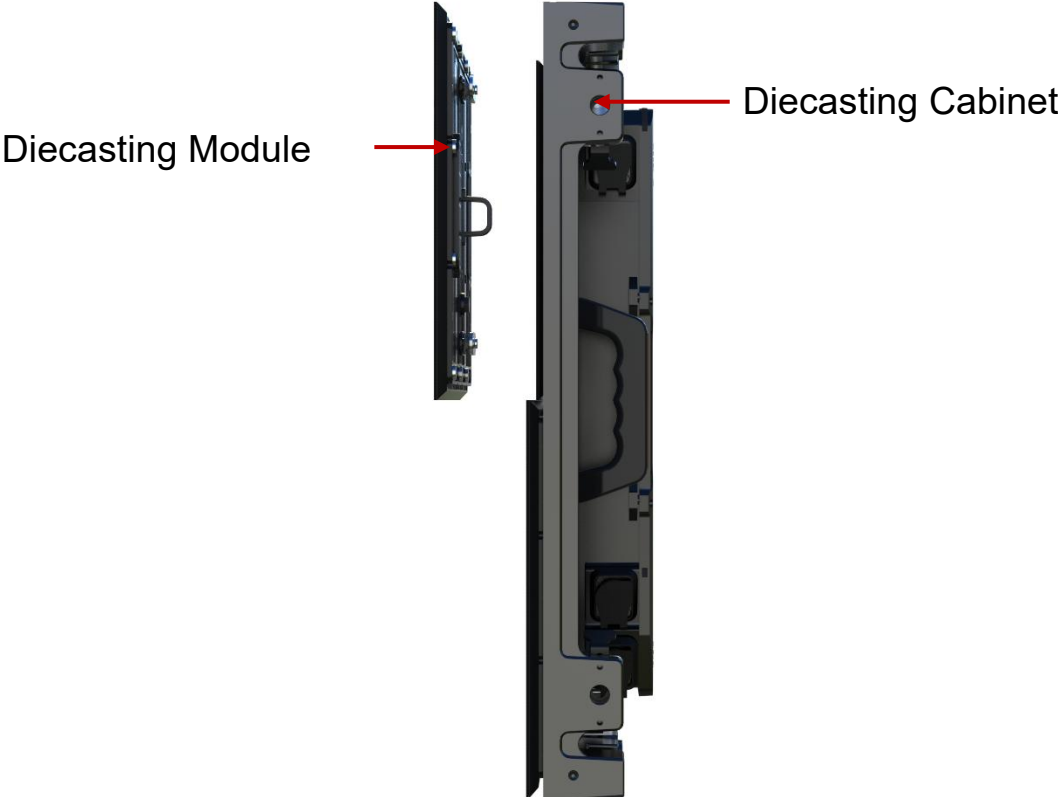


NO S-LOCK



- ✓ **Prevent Theft** (For roadside billboards in public places)
- ✓ **Shockproof** (No afraid of earthquake)
- ✓ **Prevent falling** (Protected modules against strong wind or bad weather)

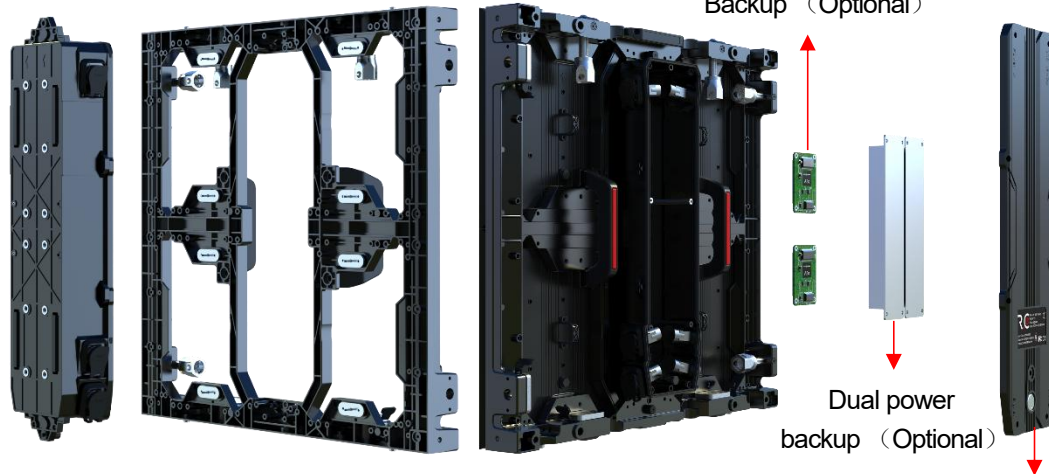
4.1 DOUBLE DIECASTING



4.2 FULL FRONT & REAR MAINTENANCE

FULL FRONT MAINTENANCE

BACK MAINTENANCE



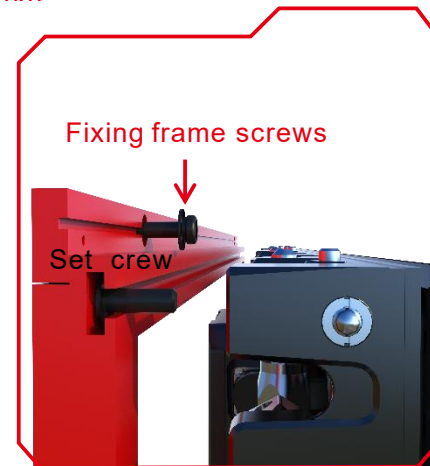
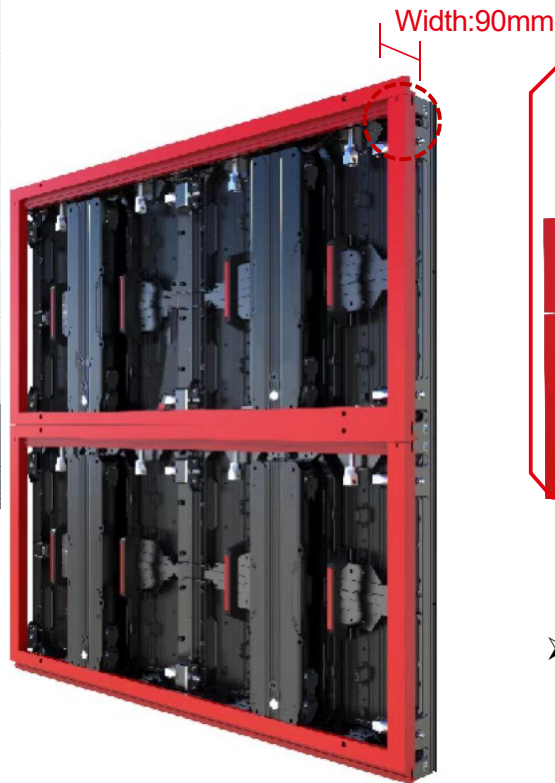
Dual signal
Backup (Optional)

Dual power
backup (Optional)

Back maintenance

Fast remove the separate
power box for interchangeable

4.3 WALL-MOUNTED



- ✓ Front installation + Full front maintenance
- ✓ Quick installation
- ✓ Ultra-thin wall mounting to save space (55% less thickness than conventional installation)

- Slim FV cabinet for wall-mounted, tailored steel structure
- With good flatness and cost-effective

5.1 VARIOUS INSTALLATION WAY

YAHAM

Yaham Optoelectronics Co., Ltd

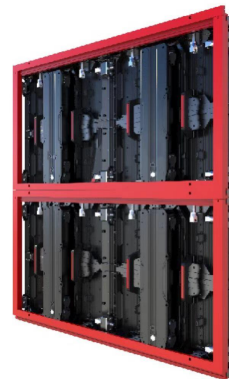
HANGING FOR RENTAL



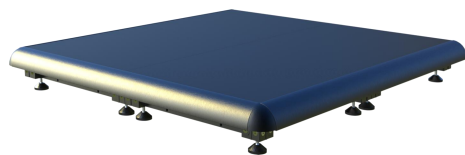
STACKING FOR RENTAL



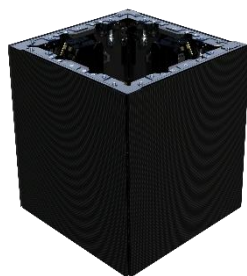
WALL-MOUNTED



**USE YOUR DISPLAY
WHERE YOU WANT**



FINE PITCH FLOOR



90° DEGREE